

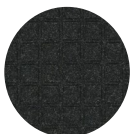
# GetFit StandUp<sup>®</sup> Mats

## Anti-Fatigue Mats • Indoor

GetFit StandUp anti-fatigue desk mats provide workers with a comfortable, healthy alternative to sitting throughout their workday, eliminating the negative effects on the body associated with sitting for long periods of time.



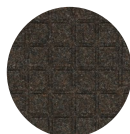
- **Comfortable** – 5/8" nitrile-blended cushion provides excellent anti-fatigue properties and alleviates pain from extended standing
- **Safe** – Beveled edges provide a seamless transition from floor to mat; edges will not crack or curl
- **Stain Resistant** – Recycled PET fabric is eco-friendly and resistant to staining; designer top is resistant to staining
- **Available in 3 surface types** - an environmentally-friendly PET fabric top (made from recycled plastic bottles), a polyester designer top, or a rubber top for maximum durability. Rubber top is grease/oil resistant\*; chemical resistant; welding safe; ESD rating of electrically conductive; anti-microbially treated for lifetime protection from odors. \*The 100% nitrile rubber surface of GetFit StandUp (rubber top) is grease/oil proof while the nitrile-blended cushion is grease/oil resistant.



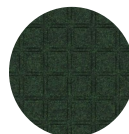
Coal Black



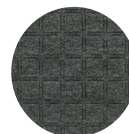
Cobalt Blue



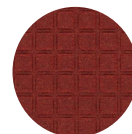
Cocoa Brown



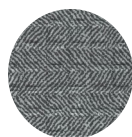
Dark Green



Granite



Red



Grey Herringbone  
(designer top)



Tan Herringbone  
(designer top)

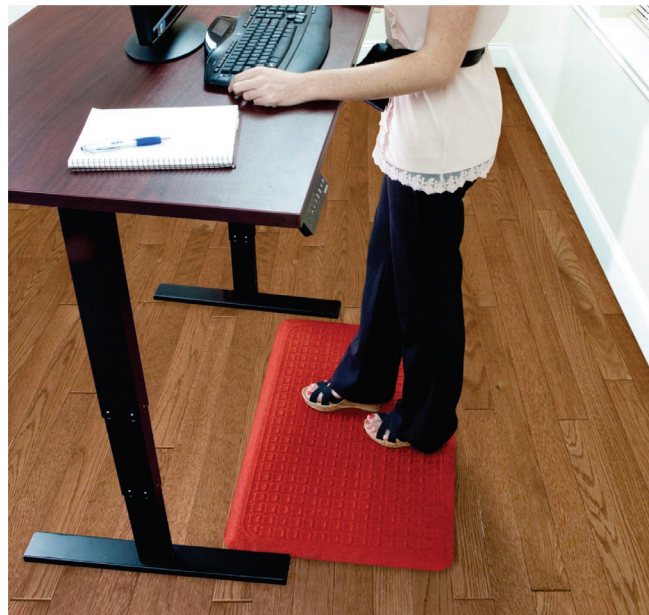
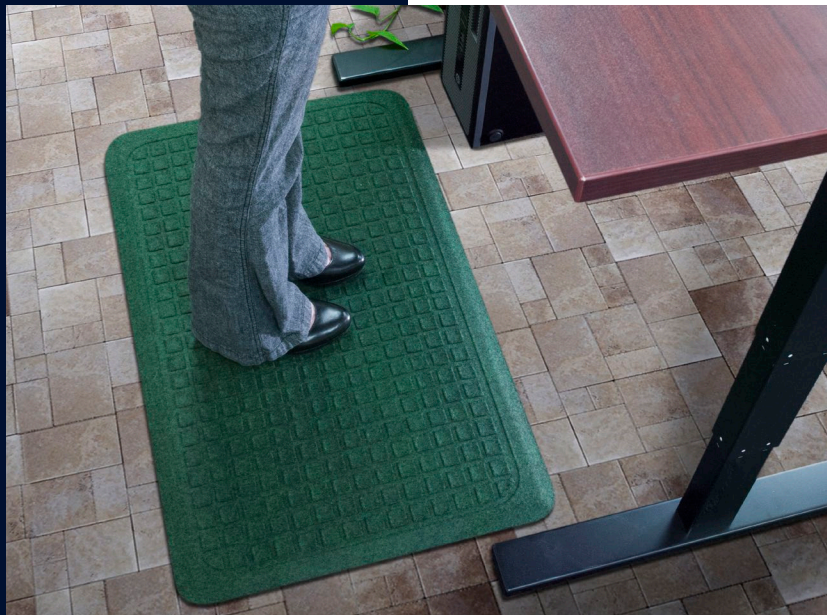


Rubber Top  
(black)



# GetFit StandUp® Mats

Anti-Fatigue Mats • Indoor



## Product No. 4443 (PET fabric top)

Size (in.)	Shipping Weight
22" x 32"	5 lbs.
22" x 50"	7 lbs.
22" x 60"	8 lbs.
34" x 47"	10 lbs.
34" x 60"	13 lbs.

## Product No. 4447 (rubber top)

Size (in.)	Shipping Weight
22" x 32"	7 lbs.
22" x 50"	8 lbs.
22" x 60"	9 lbs.
34" x 47"	11 lbs.
34" x 60"	14 lbs.

## Product No. 4448 (polyester designer top)

Size (in.)	Shipping Weight
22" x 32"	5 lbs.
22" x 50"	7 lbs.
22" x 60"	8 lbs.
34" x 47"	10 lbs.



M + A MATTING

800.241.5549

[www.mamattting.com](http://www.mamattting.com)