

# DEVELOP<sup>®</sup>

Table Bases





**A-BASES:** STANDARD, CAFÉ HEIGHT & ADJUSTABLE

For thousands of years columns have denoted places of gathering, where socialization and the exchange of ideas were encouraged. While there is no mistaking Develop's A-Bases for relics, their simple shapes are sure to make them instant classics.

Available in a 29" standard seating height as well as a 42" café height, fixed A-Bases add depth and visual interest to community spaces and casual gathering areas. They are also a natural fit in custom office configurations, where their pedestals integrate seamlessly with other product lines.

Contemporary steel columns in 3", 4", 5", and 6" diameters accommodate tabletops from a cozy 24" x 24" square to an expansive 60" round while chrome and powder-coat finishes in a variety of colors allow them to fit in wherever they are invited.

Both the disk and tapered pedestal base configurations include adjustable thermoplastic glides for additional stability on uneven floors, and high-quality steel materials for durability that will outlast cast iron and closing time.



The disk pedestal base features a 4" column composed of .04" thick steel with a welded reinforcement.



The tapered pedestal base features a 3" column composed of .04" thick steel that gracefully transitions to the base.



Why choose between standard seating height and café height if you don't have to? Height-adjustable A-Bases can be set to either—or any other height over their 27" to 44¾" range—proving that even a classic design can benefit from a fresh perspective.

A paddle control located discretely beneath the tabletop activates the pneumatic mechanism, allowing the top to be raised or lowered smoothly and easily. Its tapered pedestal base, 3" diameter column, and black or chrome finish options all help the adjustable base create a cohesive look in mixed-use environments that particularly benefit from its flexibility.







## E-BASES: FIXED, FOLDING, FLIP-TOP & CAFÉ HEIGHT

Its timeless form makes Develop's E-Base an intelligent choice for any workspace. The tubular steel legs and columns are precisely cut and brazed for seamless strength enhanced by the optional chrome finish. In addition to the corrosion-resistant duplex chrome finish, all E-Bases are available in dozens of powder-coat colors.

Multiple sizes of T- and TT-leg fixed bases suit a variety of traditional table shapes and purposes, but casual spaces especially benefit from X-legs. Standard and café heights round out your options, but regardless of the style you choose, 14-gauge steel makes sure that it will last.

Folding-leg models are designed with the same sturdy components as the fixed-top bases, and snap firmly in the fully open position for security and stability. In the closed position, the legs fold tightly against the tabletop for compact storage. A standard bumper protects tabletops from dings and scratches when they are stacked.

E-Bases are also available with a flip-top mechanism that is spring-loaded for easy use. Folding bases are available in multiple sizes of T-and TT-legs, while flip-top models come in X-leg and T-leg configurations.

Thoughtful options give E-bases a place in a variety of environments. A rolling base on the T-leg fixed base allows a user to lift one end and drive the table like a wheelbarrow, while modesty panels provide privacy during one-sided use. Whether in conference rooms, offices, or workspaces, the simplicity and craftsmanship of E-Bases bring form and function to your environment.



Folding legs can be specified on E-Bases with T- or TT-leg configurations. T-legs can also be ordered with a flip-top option.



Modesty panels can be removed with a quick-release option to easily transition tables into different configurations.



The rolling base option allows tables of any dimension to be moved more easily for cleaning and maintenance.



Rolling bases use discreet wheels beneath one end of the table to allow it to be "driven" when the other end is lifted.





## L-BASES: FIXED & ELECTRICALLY ADJUSTABLE

With an understated rectangular leg and low-profile foot, L-Bases call attention to themselves for what they do, not how they look. Even at rest, L-Bases put users first. The width-adjustable frames keep cross members close to the underside of the table, eliminating the need for a knee-bruising mid-mount beam.

The sturdy steel construction, centered leg post and unobtrusive foot allow fixed-height L-Bases to not only support worksurfaces up to 36" x 72", but also accommodate the users that gather around both sides of them.

In addition to the fixed-height base, dual-motor and triple-motor electric adjustable L-Bases are also available, offering sit-stand capabilities for rectangular, 120° corner, and square shoe tables, respectively. All of these bases use a motor to drive each leg independently and a control box to synchronize them.

Adjustable L-Base tables have telescoping legs that create an attractive profile at every height, over their entire range of 26" to 52". In addition to the traditional T-leg, a cantilevered leg (C-leg) configuration is available to provide even more usable space beneath the worksurface on one side of the table.

A generous load capacity ensures that every L-Base can accommodate a typical user's equipment and supplies, so whichever model you choose, selecting an L-Base will leave you looking good and feeling even better.



Height adjustment from 26" to 52" can be made by dual-motor L-Bases, making them perfect for sit-stand applications.



Unobtrusive controls easily and smoothly adjust tables under load. A deluxe option also displays the height and stores presets.



Undermount R8 allows eight under-surface electrical receptacles to be powered by a single plug-in connection.



Vertical cable management keeps power cords and cables running from the floor to the surface neat and safe during height adjustments.







**P-BASES:** FIXED, FOLDING, FLIP-TOP & CAFÉ HEIGHT

Instead of conventional round tubes, Develop’s P-Bases feature elliptical feet for a touch of contemporary elegance. Poly end-caps and column-caps are available in a variety of colors.

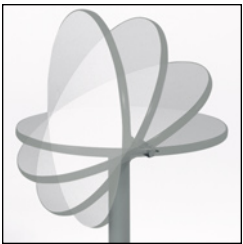
Fixed T-leg and TT-leg configurations are each available in two sizes and in standard seating or café heights. Fixed X-legs can also be specified in two sizes and heights to suit a variety of applications. 14-gauge steel components make every option a durable one. Adjustable nylon-tipped glides are standard on all models to protect your flooring.

The flip-top and folding bases are just as hardworking as the rest of the family, they just keep a lower profile at the end of the day. The folding legs of P-Bases snap securely into place to prevent shifting in storage, while hinge bumpers protect other tabletops from scratches whether they are stacked vertically or horizontally.

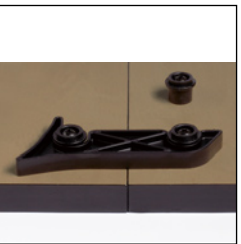
In addition to the standard folding bases for tables over 60" long, we offer short fold bases which allow the legs of 48" and 60" tables to be folded neatly within the tabletop’s footprint. Flip-top models are available in two sizes of X- and T-legs. Both are ready to work as hard as you are and look great doing it.



Vertical leg wire manager (all tables) consists of a black rigid plastic sleeve that attaches to the table leg to route cables cleanly.



A flip-top reduces the storage space required for any size table without putting its top in contact with the floor.



Ganging device (all tables) allows tables to be mechanically connected without requiring tools and stows securely when not in use.



Legs are finished with adjustable nylon-tipped glides to protect flooring.



Folding mechanism for tables 48" or 60" long is called a short-fold base; tables over 60" use a standard folding base.





## R-BASES: FIXED & NESTING

High style meets unexpected functionality with Develop R-Bases. A tubular leg and blade-shaped foot give the bases a distinctive contemporary look, but it's the way they move that truly set them apart.

R-Base nesting tables feature a unique mechanism that kicks out their legs as the tabletop is lifted. This leg rotation allows the tables to nest in a straight line, reducing the footprint of a group of tables in storage without sacrificing legroom on either side when the furniture is in use.

Both fixed and nesting R-Bases easily accommodate tops from 18" x 30" to 36" x 72," but fixed bases with C-, X-, T- or TT-legs also support an even wider variety of top shapes, including the eye-catching guitar pick and SCALE-UP. They can also be specified to support an array of functions from conference, training and collaborative tables to dining and occasional tables in social spaces and desks for active learning.

T-leg R-Bases elevate educational spaces with their three heights. Seated, countertop and café height tables can be combined to create tiered classrooms. Computer labs, training rooms and offices all benefit from the vertical wire management available with fixed R-Bases which cleanly routes cables from the tabletop to the floor along the leg.

With their clean design and innovative nesting mechanism, the "R" in Develop R- Bases stands for revolutionary.



Nesting tables are unlocked by pressing the paddle at either end, which allows the top to be lifted and legs to articulate.



Cable management is accomplished by an aluminum extrusion that snaps to the leg, keeping cords neat from tabletop to floor.



Fixed base leg assemblies are offset on their steel mounting plates to provide greater legroom for the user.







Modesty panels are available in quick-release or folding varieties that can be detached or swing out of the way when tables are stored.



Nesting tables allow them to be stored more efficiently than if they were upright, without any risk of tabletops contacting the floor.



Single bar flip action makes transporting and storing the tables a single-handed proposition.

## T-BASES: Fixed, Folding & Nesting



With modern styling and mobility, Develop's T-Bases provide you with countless options. Square, round, rectangular, and trapezoidal shapes can be accommodated to create innovative arrangements that are a snap to reconfigure. Even when T-Bases are stationary, their styling indicates they will be ready for whatever comes next. The drawn-steel uprights, substantial casters, and angled leg profile make T-Bases look like they could handle off-road conditions, even if they are more likely to encounter heavy pile than dry washes.

Accessories suited to the typical collaborative or classroom environment include quick-release or folding modesty panels, a unique tool-free ganging mechanism and PowerUp®, an option that provides desktop access to power and data. Convenient flip-top and folding table options allow you to maximize your storage space and transport tables with ease. Flip-top tables with a single bar mechanism allow you to release the paddles at both ends of the table with one hand and flip it without assistance. Folding tables include safety locks that prevent accidental movement of the legs.

With their outstanding functionality and eye-catching design, Develop's T-Bases will make you look at tables like you never have before.







### W-BASES: Fixed & Adjustable

Taking their cues from the Mid-Century modern aesthetic, W-Bases cover all the angles. Relying on simple geometric shapes to create a T-leg that is as robust as it looks, W-Bases require no interfering cross-braces. Low profile feet and a single-post leg design allow the fixed-height bases to do double duty supporting worksurfaces within stations as well as freestanding tabletops. Also multiplying the utility of these bases, are three height-adjustable models.

Crank-adjustable bases rely on a rod & pinion gear system to connect the ends of the base allowing them to move smoothly in unison from 27" to 47". When not in use, the crank handle stows unobtrusively beneath the tabletop.

Electrically adjustable bases are equipped with a controller that contains a digital height display. Not only does this display allow you to find your perfect height from 22" to 48" no matter where you go, it also lets you set multiple tables the same height easily.

Counterbalance bases use a spring and pneumatic cylinder working in concert to make the tabletop seem weightless when the brake is disengaged. They allow users to make adjustments over the 28"-47" range intuitively with very little effort.

Together these mechanisms put height-adjustable W-Bases within reach for clients regardless of budget.



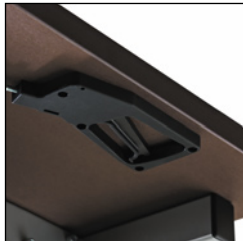
The rolling base option uses inline casters beneath one end of the table to allow a user to lift the opposite end and steer the base out of the way.



Electrically adjustable bases feature controllers that allow users to make adjustments quickly and accurately.



The crank mechanism allows a single person to make height adjustments manually requiring no power cords.



The counterbalance mechanism provides lifting assistance without requiring electricity and works just like magic.





Product fabrics and finishes shown are reproduced as faithfully  
as possible within the limitations of the printing process.

OE-00437R10/PDF0322