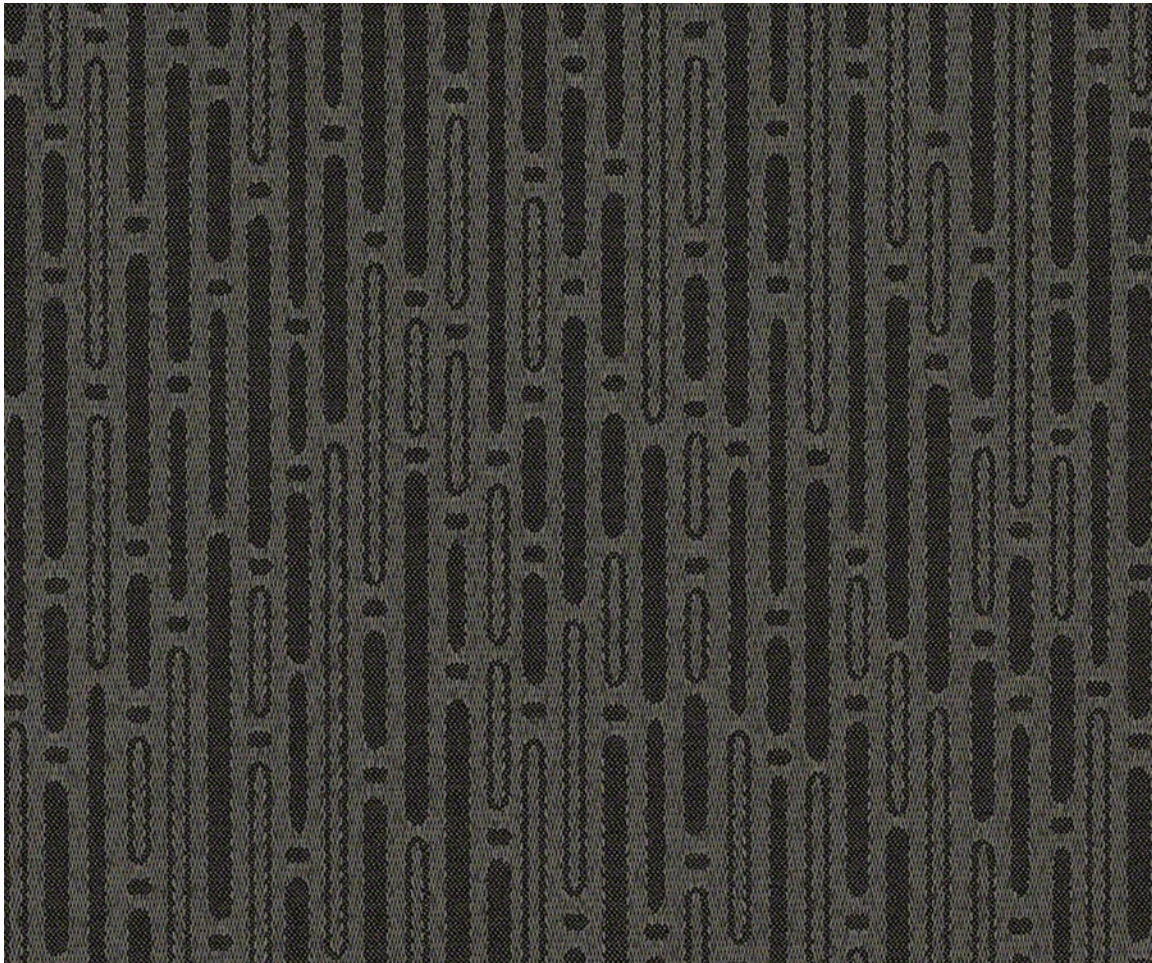


Care Guide

Fast Lane

PERFORMANCE FABRIC



Fast Lane - 63961 Anthracite

© 2018 C.F.Stinson, LLC. All rights reserved.

Content	54% Polyester, 30% Post Industrial Recycled Polyester, 16% Post Consumer Recycled Polyester
Finish	Non-PFOA Stain Resistant
Cleaning Code	(W-S) For water-based stains use water-based cleaners. For oil-based stains use solvent-based cleaners. We recommend using a professional cleaning service. Bleach solutions of up to 10% may be used for more difficult stains.

Visit cfstinson.com for complete specifications.

Stinson®

Code W-S

Clean with water-based cleaners or water-free solvents. For water-based stains use water-based cleaners. For oil-based stains use solvent-based cleaners. Do not saturate or over wet. Vacuuming or light brushing is recommended to prevent dust and soil buildup. Cleaning codes apply to the outer covering fabric only. Cushion covers should not be removed and laundered.

Maintenance / General Recommendations

Clean and maintain your furniture regularly. We recommend using a professional cleaning service. Maintenance is routine, on-going care which reduces the build-up of soil on the fabric's surface. Maintenance also includes promptly treating spots and stains. The longer a spot or stain remains on a textile, the more difficult it will be to remove. Vacuum frequently using an appropriate upholstery attachment to avoid pilling.

Always test any cleaning method or cleaning agent on an inconspicuous area on the furniture. Several light applications of a cleaning agent are less harmful than a single concentrated application. If stain persists, stain has probably set. Some agents and ballpoint inks can create a permanent stain.

Stain Treatment / Disinfection

For solid stains, allow the stain to dry. Use a soft bristle brush to remove loose particles. Vacuum thoroughly before cleaning with an agent.

If stain persists, or to disinfect area, use a solution of up to 10% household bleach and 90% water. Blot stain with cloth saturated in diluted bleach mixture. **Never** use bleach in full strength to clean or disinfect the surface material. Rinse treated area thoroughly with a clean, damp sponge to remove any cleaning solution residue.

Avoid excess rubbing or scrubbing to prevent damage to the surface of the textile.

Do not over saturate the textile or allow fluids to penetrate the surface. Remove fluids immediately by blotting with a clean, absorbent cloth. Allow fabric to dry thoroughly.

The information published in this Care Guide refers to performance of this product in specific tests conducted under laboratory conditions. Results may vary under actual conditions.

The information published in this Care Guide is not a guarantee and does not relieve the user from the responsibility of proper and safe use of the product and all cleaning agents. The use of certain agents can be harmful to the surface appearance and lifespan of the material. C.F. Stinson, LLC, its agents, representatives and assigns assume no responsibility resulting from the use of such cleaning agents on the material.

Under no circumstances shall C.F. Stinson, LLC be liable for any incidental, consequential, or other damage resulting from the negligence, misuse, mishandling, or exposure of any chemicals used in connection with maintenance and cleaning. Information relating to chemicals/cleaning agents, environmental use and human exposure should be reviewed with the appropriate suppliers. All label instructions on their use and precautions should be followed.

Care Guide
Fast Lane

PERFORMANCE FABRIC

Stinson®

C.F. Stinson, LLC
2849 Product Drive
Rochester Hills, MI 48309

P 800 841 6279
F 248 299 3884

cfstinson.com