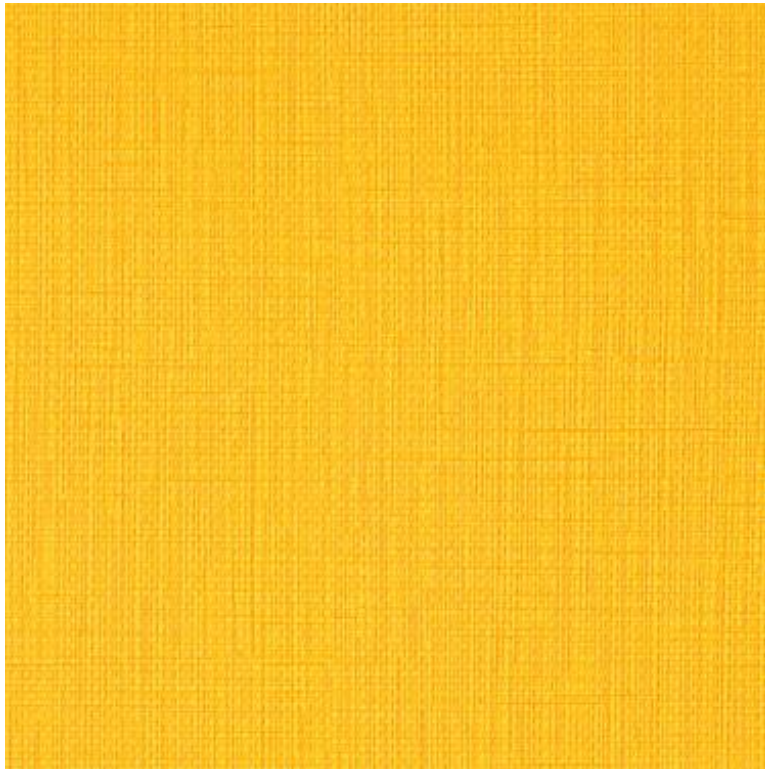




# Cleaning Guide

---



**Pattern:** Beeline EPU

**Color:** Sundance

**Product Number:** 09125653

**Content:** 100% EPU Polyurethane

## W General Recommendations

- Clean with water based foam or cleaner
- Do not saturate with liquids
- Do not get the furniture wet

## Regular Maintenance

- Clean monthly with a clean, soft, colorfast, damp, soapy cloth or sponge and rinse with clean water

## Stain Treatment and Spot Cleaning

A professional cleaning service is recommended

Treat stains quickly

- It will become increasingly difficult to remove the longer a stain is allowed to set
- Pretest any cleaning method or agent in a small hidden inconspicuous area
- Several less concentrated applications are less damaging than one concentrated application

Remove fluids immediately by blotting with a clean, colorfast, absorbent cloth

Flush stain with water and dry with clean cloth

### **Rinse all cleaning agents thoroughly with water and wipe with a soft cloth**

- Residue left by cleaning agents will degrade and shorten the life and/or affect the product's appearance if not removed.

Remove solid or semi-solid substances

- Using a flat object, remove as much of the stain as possible
- After removal, vacuum thoroughly using the proper attachments before cleaning with an agent

Abrasive household cleansers and steel wool should be avoided

## Bleach Cleanable

To disinfect spray a 4:1 ratio water/bleach mixture on the fabric and allow to linger for the time specified by the Centers for Disease Control and Prevention.



# Cleaning Guide

---

## **Rinse all cleaning agents thoroughly with water and wipe with a soft cloth**

- Residue left by cleaning agents will degrade and shorten the life and/or affect the product's appearance if not removed.

## **Approved Cleaners**

This list represents some of the most common options available and is not intended to be comprehensive.

3M HB Quat #25  
3M Neutral Cleaner 3H  
3M Twist-n-Fill #23  
Accel Prevention  
Accel TB  
Asepticare TB + II  
Betco Quat Stat 5  
Birex SE  
Cavicide  
Cavicide1 and Caviwipes1  
Caviwipes  
Citrace  
Clorox Bleach (4:1 water to bleach)  
Clorox Healthcare Bleach Germicidal Cleaner  
Clorox Healthcare Hydrogen Peroxide Cleaner  
Clorox Pro Quaternary All Purpose Cleaner  
Clorox Wipes  
Coverage Spray HB (Steris)  
Dispatch  
Isopropyl Alcohol  
Lysol Advanced Wipes  
Lysol Spray  
Optim 33 TB Wipes  
Oxivir 1  
Oxivir TB  
Oxycide  
PCS Sodium Hypochlorite Disinfectant Cleaner  
PDI Bleach Germicidal Disposable Wipes  
PDI Sani-Cloth HB Germicidal  
PDI Sani-Cloth Plus  
PDI Super Sani-Cloth  
PDI Super Sanicloth Bleach  
Peridox RTU  
Perisept  
Rescue  
Sani-wipes  
Sanizide  
Triad III  
Virex II 256  
Virox 5 Concentrate  
Virox 5 RTU  
Wexcide



# Cleaning Guide

---

The cleaning recommendations above are a guide to help in the maintenance of Momentum Textiles fabrics. They are supplied without warranty, representation or inducement of any kind, including, but not limited to, the implied warranties of merchantability and fitness for particular use or purpose. Momentum Textiles can neither guarantee, nor take responsibility for specific results.

Under no circumstances shall Momentum be liable for any incidental, consequential, or other damage resulting from negligence, misuse, mishandling or exposure of any chemicals used in connection with maintenance. Information relating to chemicals/cleaning solvents, environmental use, and human exposure should be reviewed with appropriate suppliers. Users must read the product specifications and determine appropriateness for specific applications. All label instruction precautions should be followed. All cleaning agents must be rinsed thoroughly with water and wiped with a soft cloth. Residue left by cleaning agents will shorten the life of the product if not removed.